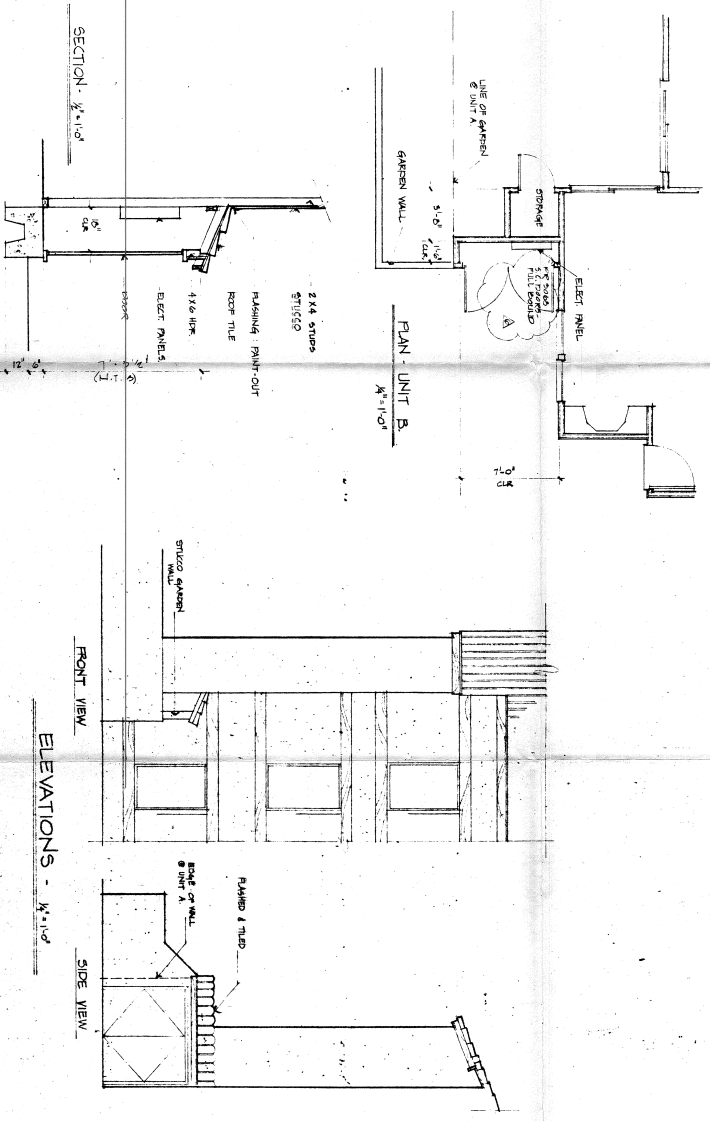
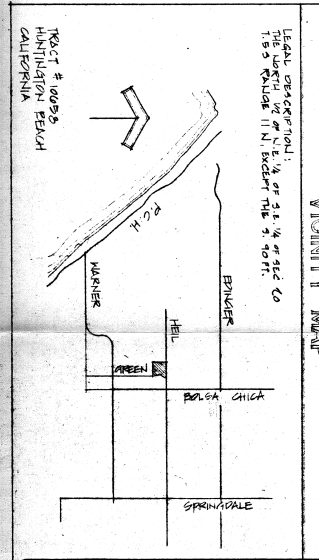


ELECTRICAL PANEL ENCLOSURE



SHEET INDEX	
NO.	TITLE
5-F1	COVER SHEET
A-1	SHEET INDEX
A-2	BUILD. A - FOUNDATION PLAN
A-3	" - 1ST FLOOR PLAN
A-4	" - 2ND FLOOR PLAN
A-5	" - 3RD FLOOR PLAN
A-6	BUILD. B - FOUNDATION PLAN
A-7	" - 1ST FLOOR PLAN
A-8	" - 2ND FLOOR PLAN
A-9	" - 3RD FLOOR PLAN
A-10	ROOF PLANS & DETAILS
A-11	BUILD. A - EXTERIOR ELEVATIONS
A-12	BUILD. B - EXTERIOR ELEVATIONS
A-13	UNIT FLOOR PLANS - UNITS A & B
A-14	" - UNIT C
A-15	BUILDING SECTIONS - UNIT A
A-16	BUILDING SECTIONS - UNIT B
A-17	BUILDING SECTIONS - UNIT C
A-18	STAIRWAY, PLANT SECTIONS
A-19	STAIRWAY, FAMILIAR PLANS
A-20	STAIRWAY, FINISHES DETAILS
A-21	TYPICAL FINISHES DETAILS
A-22	RESTRICTIONS
A-23	SPECIFICATIONS, REFLECTED CLG. PLANS
A-24	RECREATION DECK, FLOOR & FURNITURE PLANS, INTERIOR ELEVATIONS
A-25	RECREATION DECK, ROOF PLANS, SECTION & ELEVATIONS
A-26	COURTARDS, PLANS, SECTIONS & ELEVATIONS

CONSTRUCTION PLANS	
BUILD. DATA	SITE DATA
CONSTRUCTION TYPE: V. I. H.K.	UNITS: 120 CONDORMINIUMS
CONTRACT: R-11 FIRE ZONE, II	ACRES: 8.70 GROSS, 7.36 NET
COVERING CODE: 1976 U.B.C.	DESIGN: 1445 UNITS PER GROSS ACRE
UNIT MIX: 10% 1 BR	ZONE: R2 (MEDIUM DENSITY RESIDENTIAL)
20% 2 BR	PARKING: REQUIRED - 282
50% 3 BR	PROVIDED - 289
20% 4 BR	



CRAIG COMBS ASSOCIATES ARCHITECT

1535 MONROVIA AVENUE NEWPORT BEACH, CALIF. AREA CODE 714-646-8040

JOB NO. DATE DRAWN OWNER REV. DATE

PROJECT TITLE

SHEET NO. A-1 OF 1